

MONTHLY MEMBERSHIP PROGRESS REPORT

District 11 C2

Results as of: 6/30/2020

GMT:

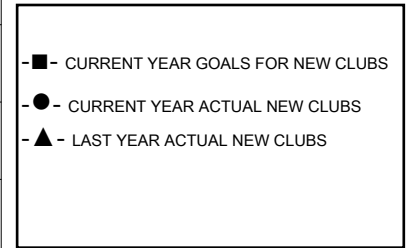
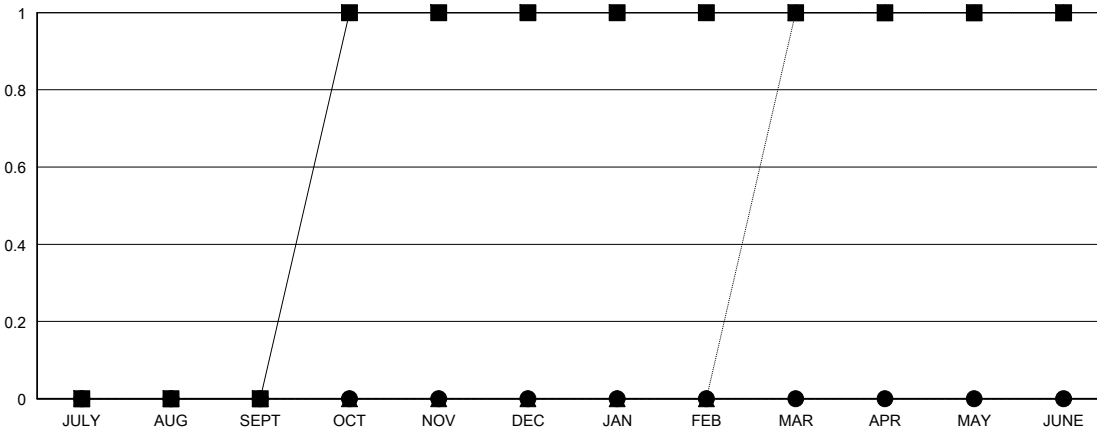
LOCATION MICHIGAN

GMT CA

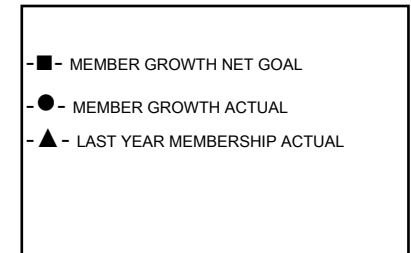
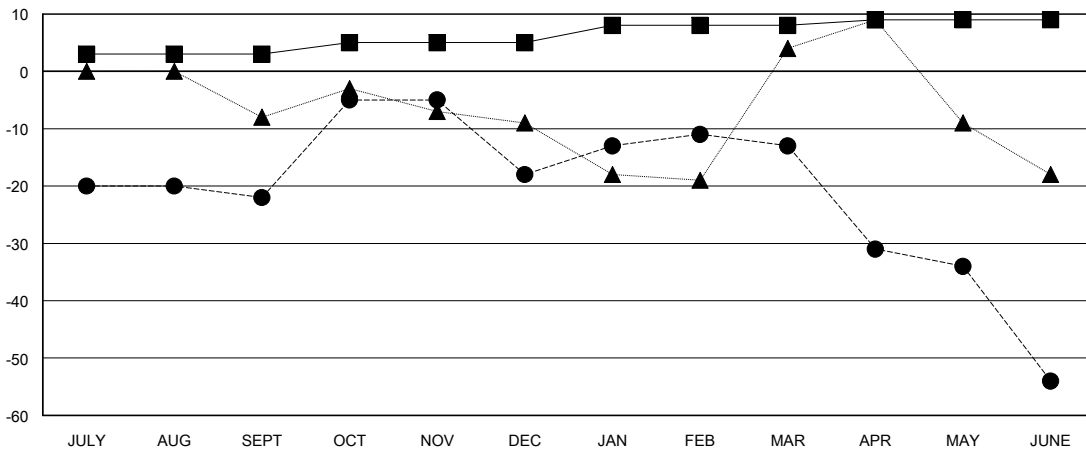
Clubs			
RESULTS FOR 2019-2020			
QUARTER	NEW CLUB GOAL	NEW CLUBS	DROPPED CLUBS
JULY/AUG/SEPT	0	0	0
OCT/NOV/DEC	1	0	0
JAN/FEB/MAR	0	0	0
APR/MAY/JUNE	0	0	0

Members			
RESULTS FOR 2019-2020			
QUARTER	MEMBER GROWTH NET GOAL	MEMBER GROWTH ACTUAL	DROPPED MEMBERS ACTUAL (including transfers)
JULY/AUG/SEPT	3	3	25
OCT/NOV/DEC	2	27	23
JAN/FEB/MAR	3	17	10
APR/MAY/JUNE	1	3	43

GOALS AND ACTUAL NEW CLUBS CUMULATIVE



GOALS AND ACTUAL MEMBERS CUMULATIVE



DROPPED CLUBS: 0	16 CLUBS OF 34 ADDED 1 OR MORE NEW MEMBERS	GENDER DISTRIBUTION
		MALE 612 (73.47%)
		FEMALE 221 (26.53%)
DROPPED MEMBERS	CLICK HERE FOR CUMULATIVE MEMBERSHIP DATA	TOTAL FAMILY UNIT MEMBERS 154
DECEASED 16		FAMILY MEMBERS PAYING HALF DUES 78
CLUB CANCELLED 0		
OTHER 85		
TOTAL 101		